



DNVFRS - LARGEST AERIAL FIRE APPARATUS SPECIFICATIONS

CHASSIS

Type	Spartan Gladiator Classic		
Year	2008		
Cab	4 Door MFD 10" Raised Roof		
Vehicle Length	Overall	48' 11"	14.91 metres
	Bumper to Bumper	44' 9"	13.64 metres
Wheelbase		20' 4"	6.20 metres
Vehicle Height		11' 5"	3.48 metres
Vehicle Width	Body	8' 4"	2.54 metres
	Mirror to Mirror	10' 4"	3.15 metres
Rear Overhang	Rear tire to Bumper	12' 4"	3.76 metres
	Rear tire to end of platform	15' 10"	4.83 metres
Front Overhang	Front Tire to QB2	6' 10"	2.08 metres
Angle of Approach	10°		
Angle of Departure	9°		
Turning Radius	Curb to Curb	38' 8"	11.79 metres
	Wall to Wall	42' 6"	12.96 metres
GVWR		81,500 lbs	36,968 kg
Actual GVW		77,200 lbs	35,017 kg
Front Axle GAWF		21,500 lbs	9,752 kg
Rear Axle GAWR		60,000 lbs	27,216 kg

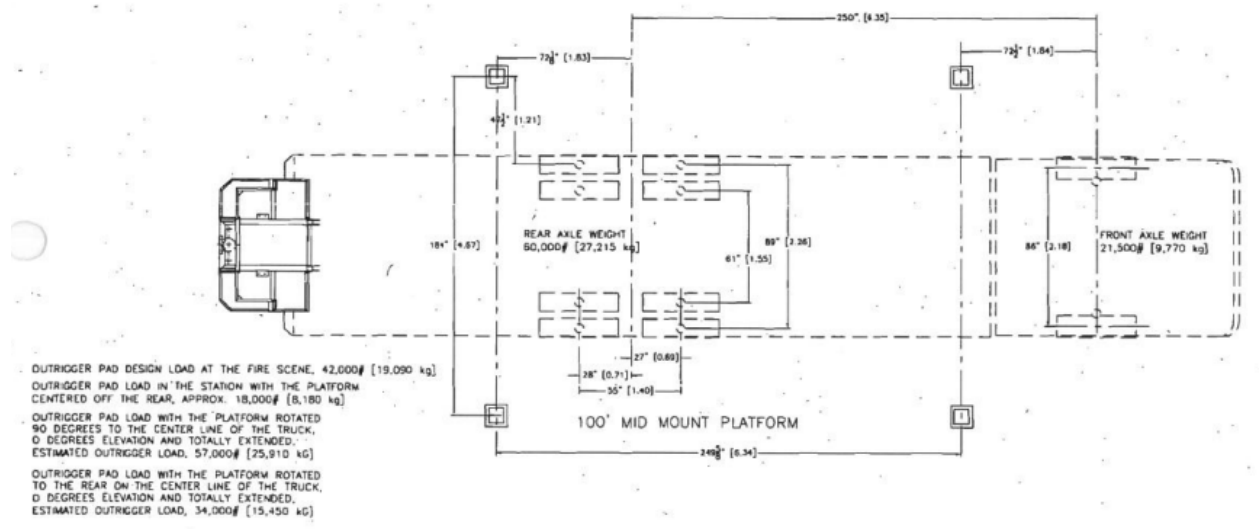
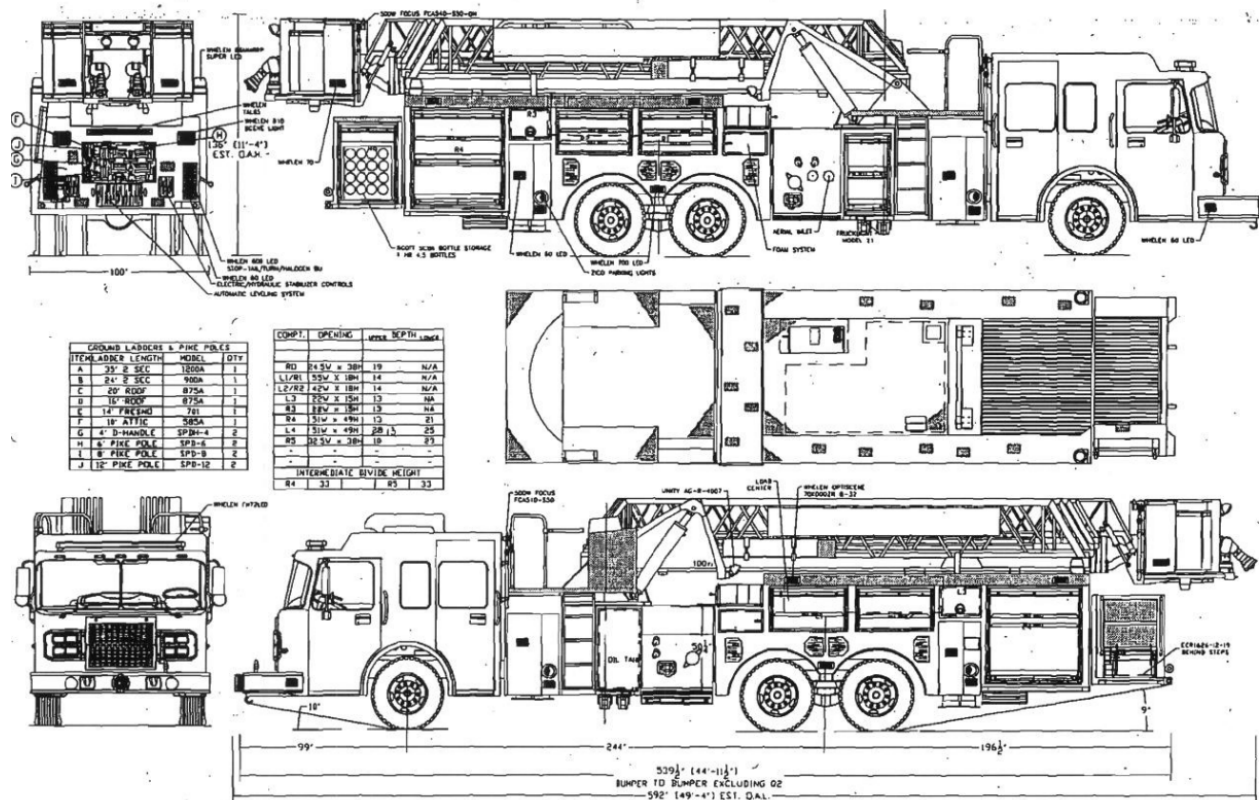
AERIAL

Type	Smeal Mid Mount Platform 5 Section Telescopic Ladder Steel Construction		
Vehicle Reach	100' @ 72°		
Horizontal Reach	99' @ 0°		
Below Grade	-12°		
Maximum Angle	72°		
Hydraulic Reservoir	200 litres		

OUTRIGGERS

Distance Fore/Aft		22'	6.71 metres
Extension		5'	1.52 metres
Width of Extension	Both Side Maximum	18'	5.49 metres
	Short Set Minimum	13'	3.96 metres
Maximum Jack Lift	Minimum ground penetration 18"	33"	0.84 metres

Largest aerial fire apparatus diagrams



Note: The outrigger pads are a Polycarbonate material and measure 24'x24' and are 2' thick. There are 4 out rigger pads available on the aerial apparatus.