

## Vision

The vision is expressed in the present tense since it is hoped that this is how the parks will be described in the future:

*The focus of Seylynn and Bridgman Parks is the natural and healthy ecosystem along Lynn Creek. Trails along the creek and through the parks provide opportunities to appreciate the trees, water, fish, and wildlife, and to link trail users to the District's pedestrian and cycling network. Each park is unique. Bridgman Park supports activities such as picnicking and play in a forested setting. Seylynn Park is a community hub, with a wide range of recreation amenities for people of all ages and abilities, and spaces where events and festivals can take place. Together, the parks offer safe and inclusive access to nature and opportunities for recreation, play, community driven events, heritage recognition, and nature appreciation, education and stewardship.*

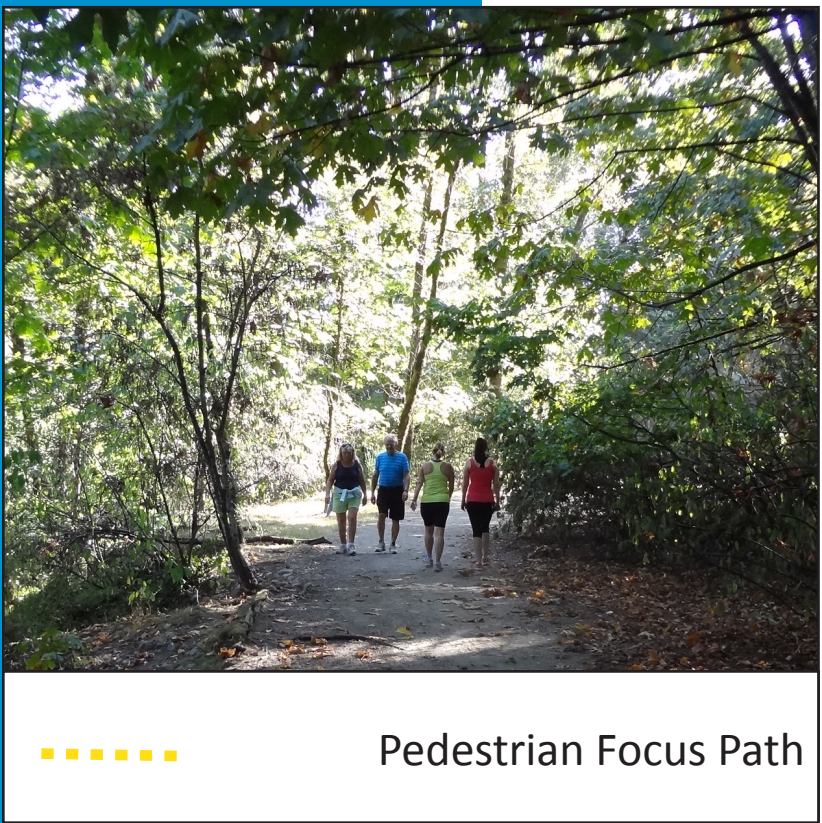
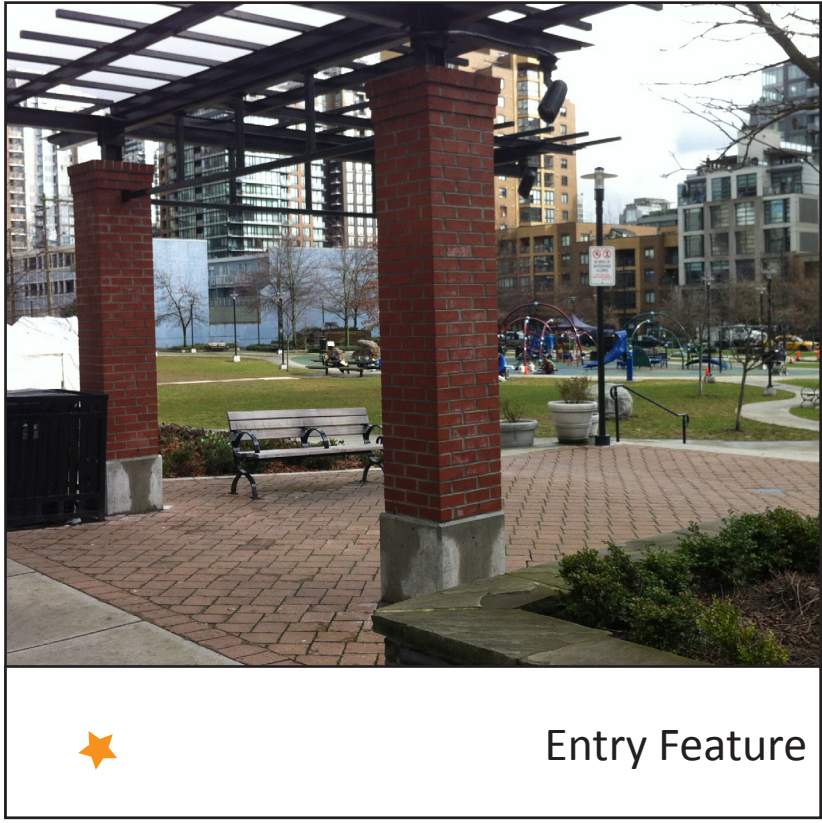
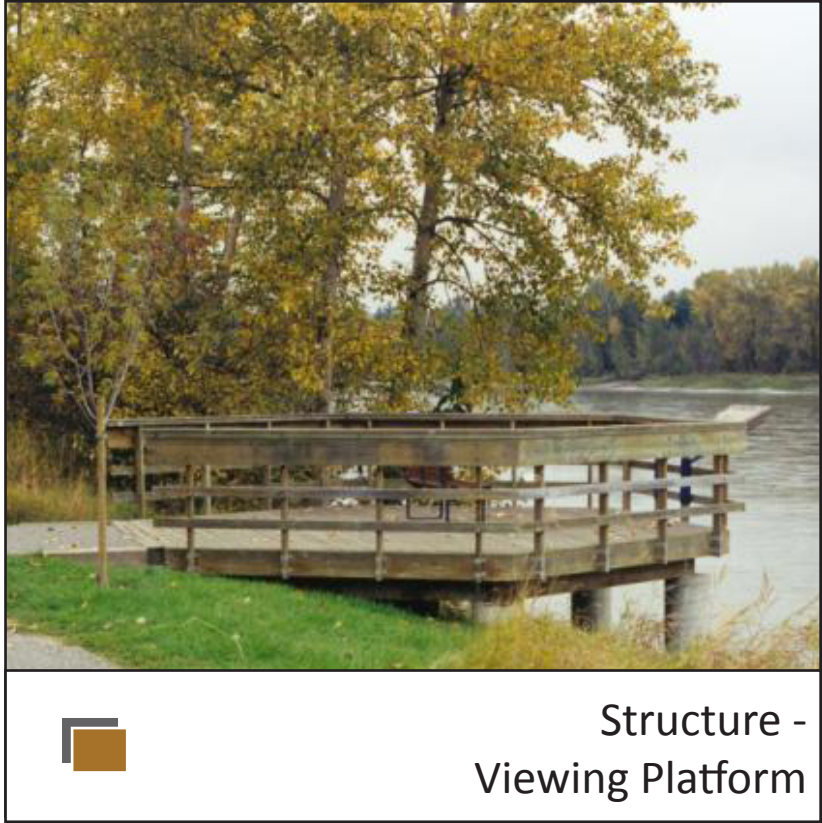
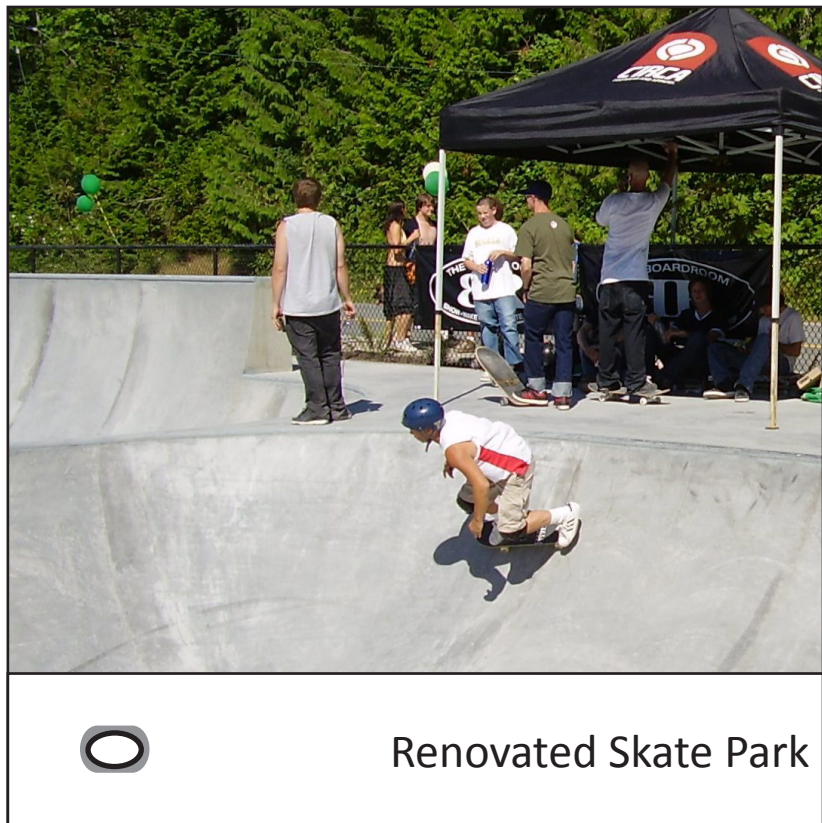
## Objectives

Objectives establish the overall direction for the master plan:

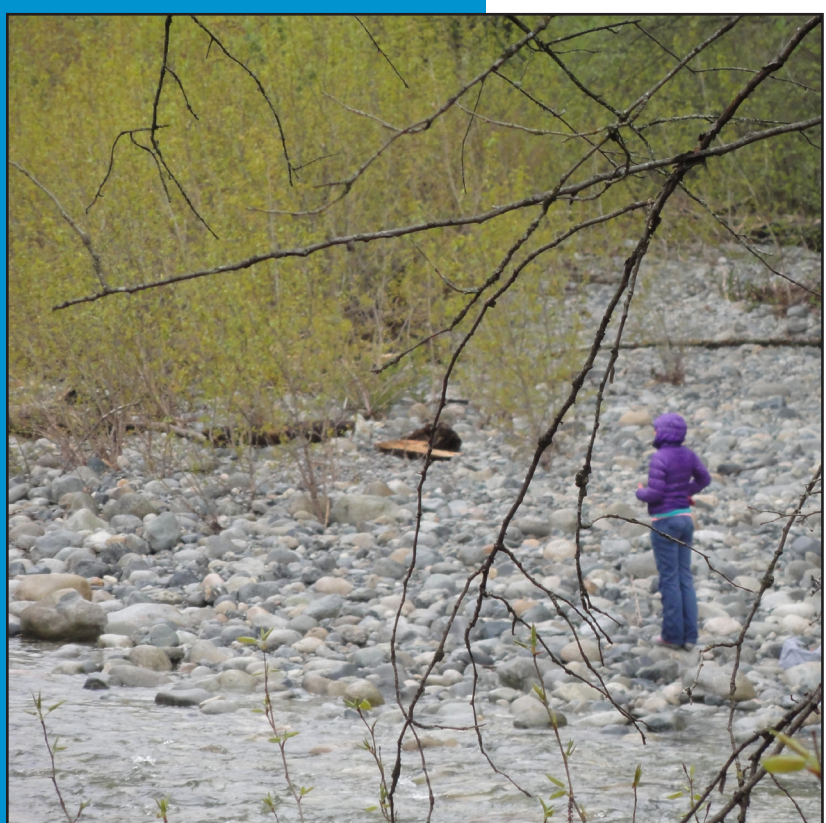
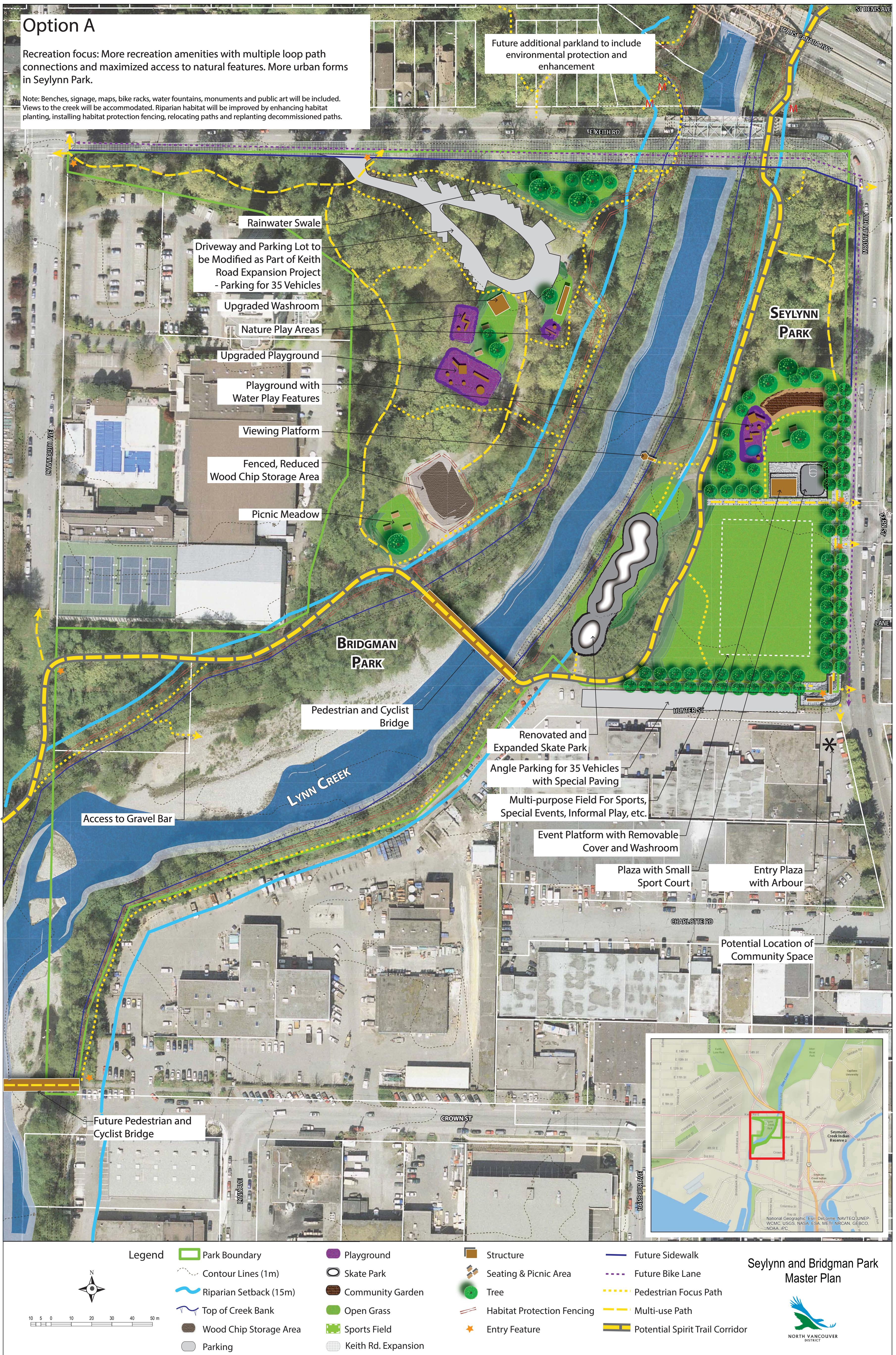
- Protect and enhance creek, riparian, and forest habitats.
- Increase opportunities for nature appreciation, interpretation, education and stewardship.
- Increase access and connectivity within, between and to the parks, with consideration for active transportation, universal design, parking, and service access.
- Improve opportunities for recreation, play, art, cultural events, and gathering.
- Improve safety and security.
- Provide the opportunity to enjoy Lynn Creek while protecting sensitive ecosystem values.
- Provide opportunities for dog use that respect the ecological sensitivity.
- Provide an urban treatment where appropriate along the south and east sides of Seylynn Park to complement the Lower Lynn Town Centre Plan.



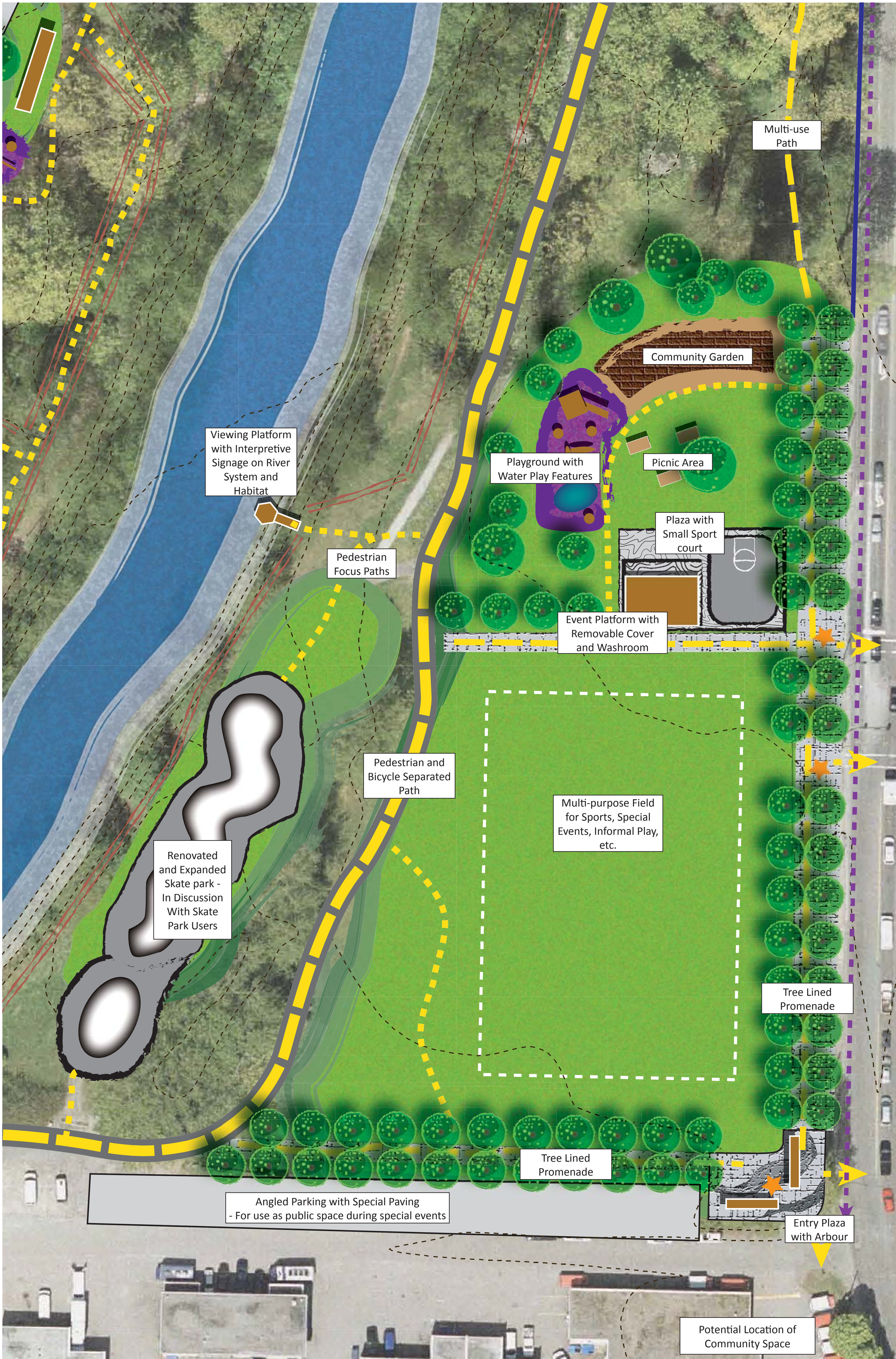
# Concept Options Elements



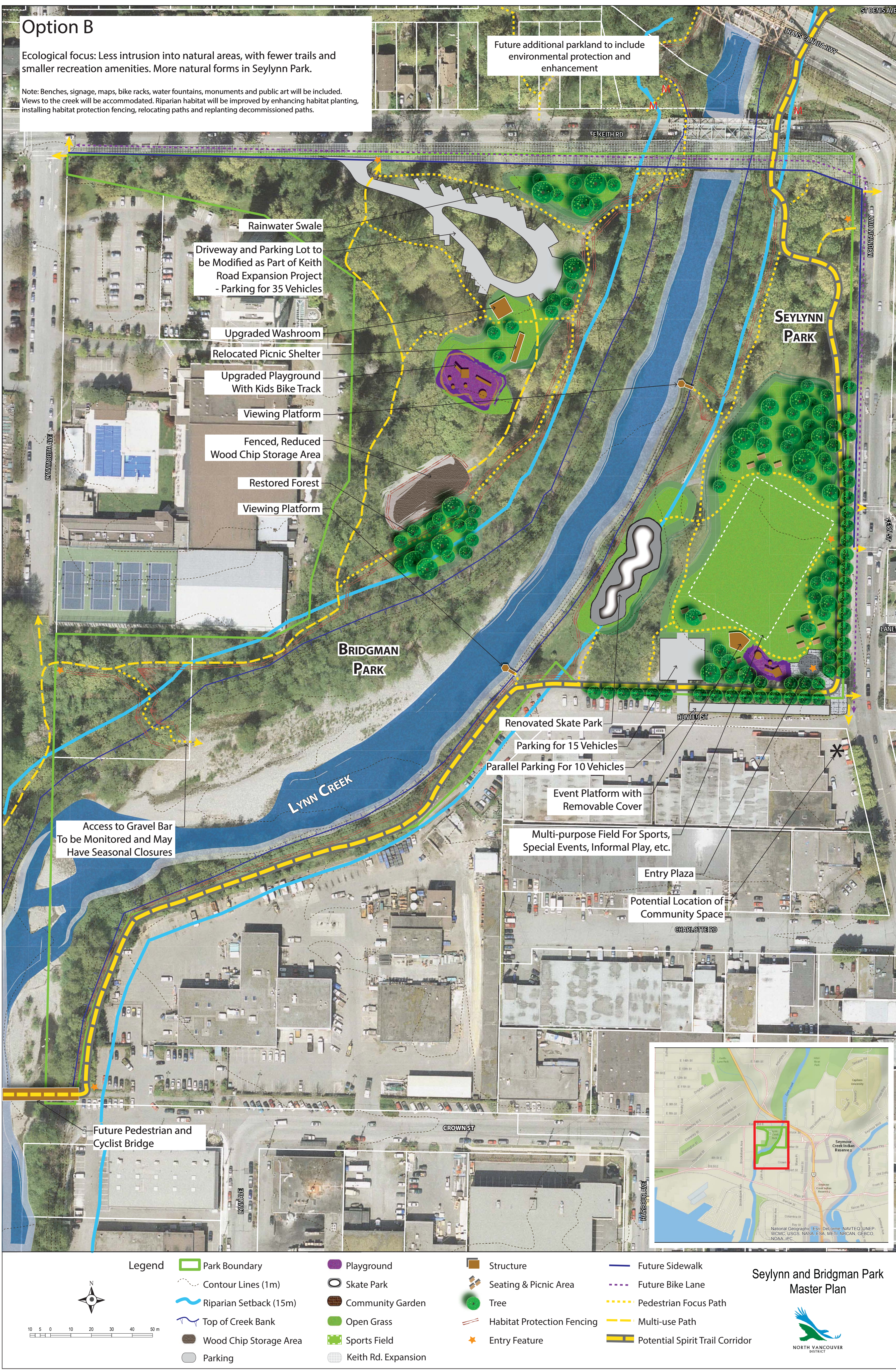
# Concept Option A



# Concept Option A - Seylenn



# Concept Option B



# Concept Option B - Seylenn

