

# Spirit Trail Eastern Extension

## Welcome!

### Spirit Trail Eastern Extension Open House Information Session

#### Land Acknowledgement

We respectfully acknowledge the original peoples of these lands and waters, specifically the səliłwətał (Tseil-Waututh), Skwxwú7mesh Úxwumixw (Squamish), and xʷməθkʷəyəm (Musqueam), on whose unceded ancestral lands the District of North Vancouver is located. We value the opportunity to learn, share, and serve our community on these unceded lands.



Make your way around the space to read the information boards and learn about our plans for the Spirit Trail Eastern Extension



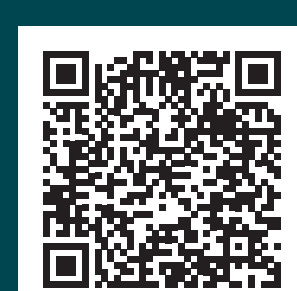
Have any questions? Our staff and consultants are here to help!



Tell us what you think! Leave your thoughts and ideas on our interactive mapping exercise



Help yourself to refreshments



# Spirit Trail Eastern Extension

## *Spirit Trail History*

More than a decade ago, the North Shore Spirit Trail was envisioned as a 35km-long, accessible connection, extending from Horseshoe Bay to Deep Cove connecting neighbourhoods and destinations along the way.

One of the key goals of the Spirit Trail is to create an active transportation connection that is accesible to pedestrians, cyclists, people with wheeled mobility aids, and other micro-mobility devices.

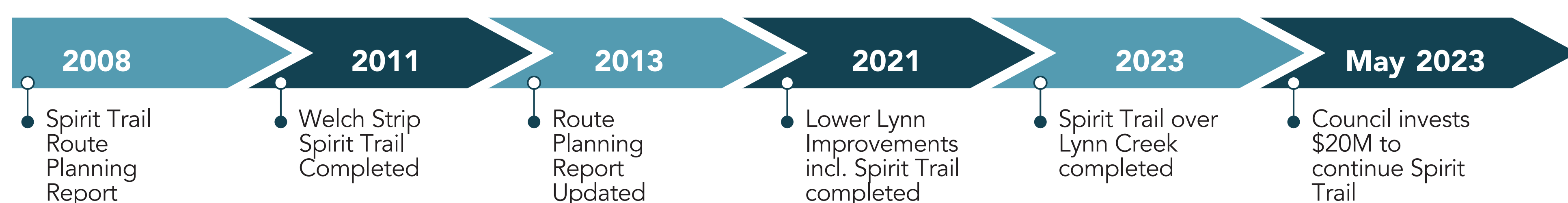
The Spirit Trail Eastern Extension will provide a continuous active transportation connection linking key destinations, neighbourhoods, parks, and schools east of the Seymour River.

**Since 2009, the District has been planning and constructing the Spirit Trail.**



Completing the Spirit Trail is a stated priority of the North Shore Connects partnership between the District of West Vancouver, Squamish Nation, City of North Vancouver, District of North Vancouver, and Tsleil-Waututh Nation.

### PAST SPIRIT TRAIL PROGRESS



The District completed its first segment of Spirit Trail in 2011, the Welch Strip in the Norgate neighbourhood.



In 2021, portions of the Spirit Trail were completed as part of the Ministry of Transportation and Infrastructure's Lower Lynn Improvement project. In 2023, the District opened the Spirit Trail over Lynn Creek, including a bridge connecting Bridgman Park and Seylynn Park.



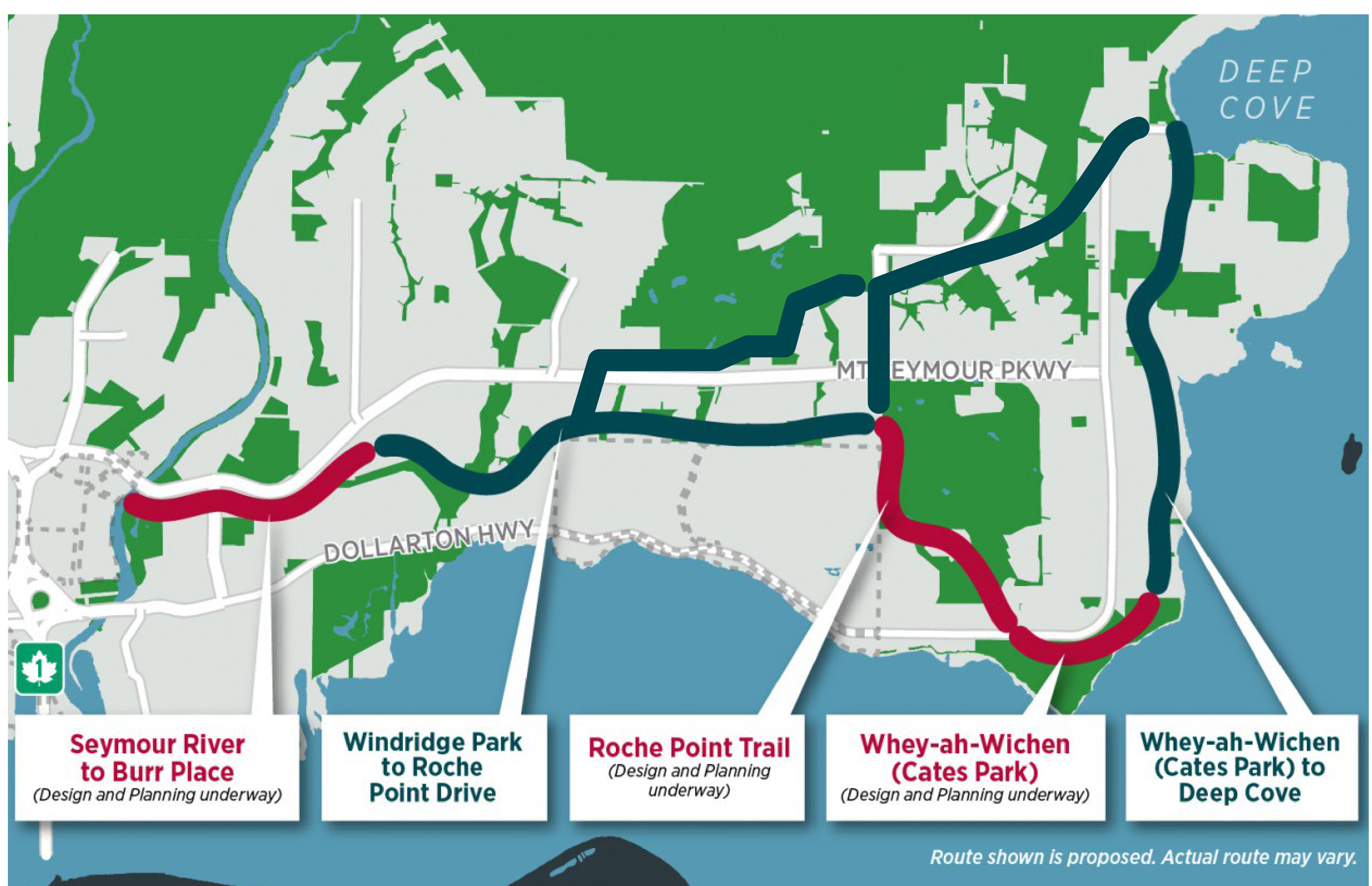
# Spirit Trail Eastern Extension

## Next Steps

### Completing the Spirit Trail Eastern Extension

In 2023, District Council approved a five-year Capital Plan that included clear direction to continue building the Spirit Trail all the way to Deep Cove.

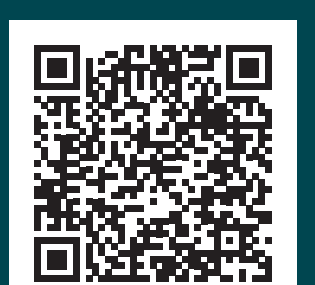
The route options being considered present the best opportunity to connect the most neighbourhoods, parks, and destinations.



### Schedule

The Spirit Trail will continue to be delivered in segments over the next few years, each with its own timeline. Our goal is to complete the entire Spirit Trail Eastern Extension by the end of 2027.

For each segment, there will be opportunities for input from local neighbourhoods and the broader community.

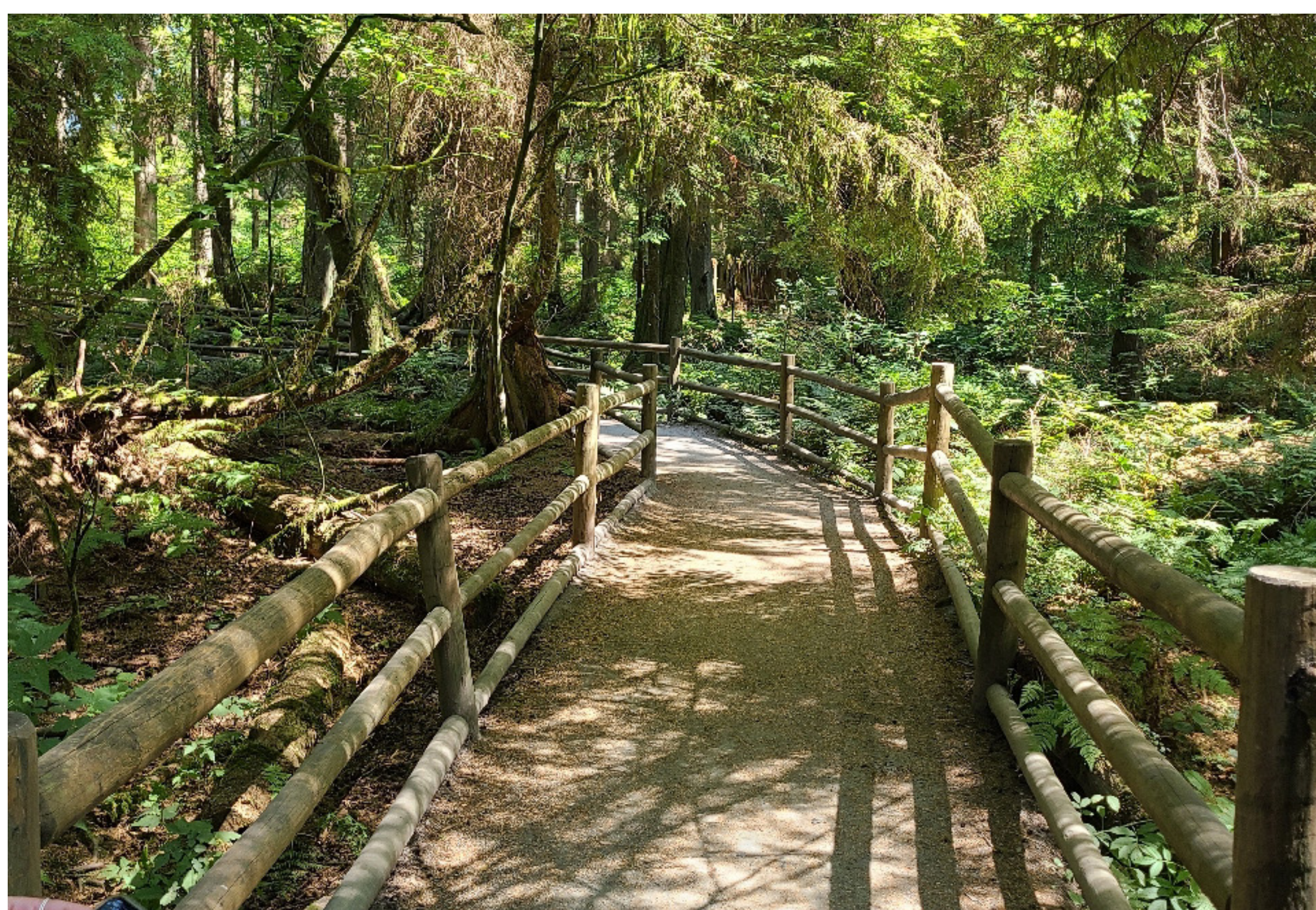


# Spirit Trail Eastern Extension

## *Site Context & Topography*

The Spirit Trail Eastern Extension passes through different environments, and topographies. These photos show some of the existing conditions along potential routes.

### **Existing Conditions**



Because of the variability, The Spirit Trail eastern extension designs will need to reflect the various local conditions, and weave through both natural and built environments.

This may include:

- new trails and bridges through forested areas and parks and across creeks
- improvements to existing trails
- new bike lanes and sidewalks adjacent to busy arterial roads
- or connections through residential neighbourhoods

In some places, there may be two parallel trails that serve different user groups, such as a paved path for cyclists and a gravel path for pedestrians.

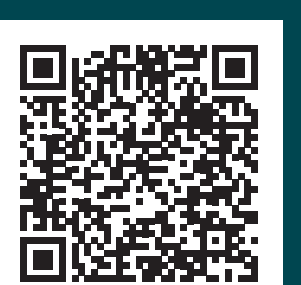
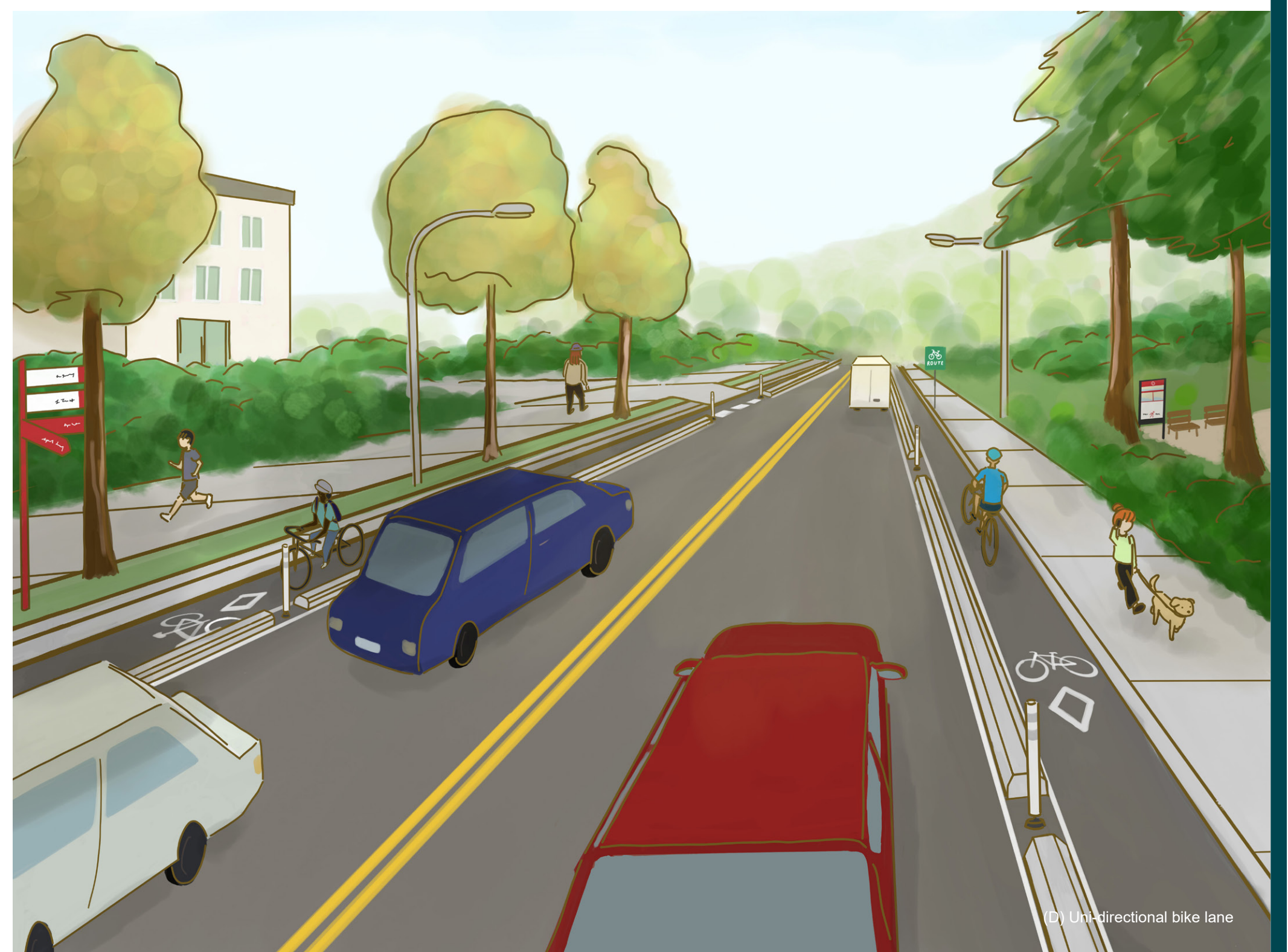
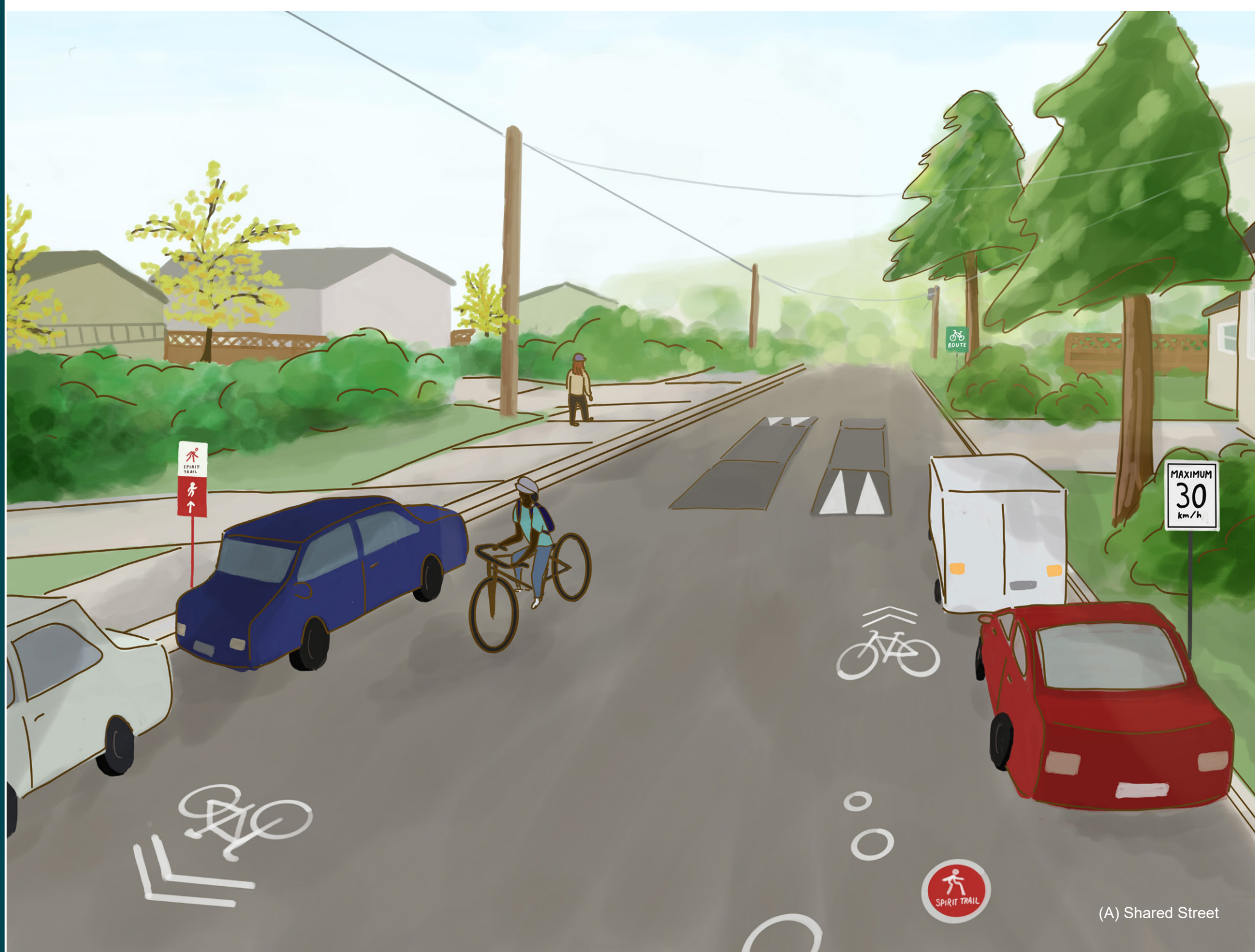
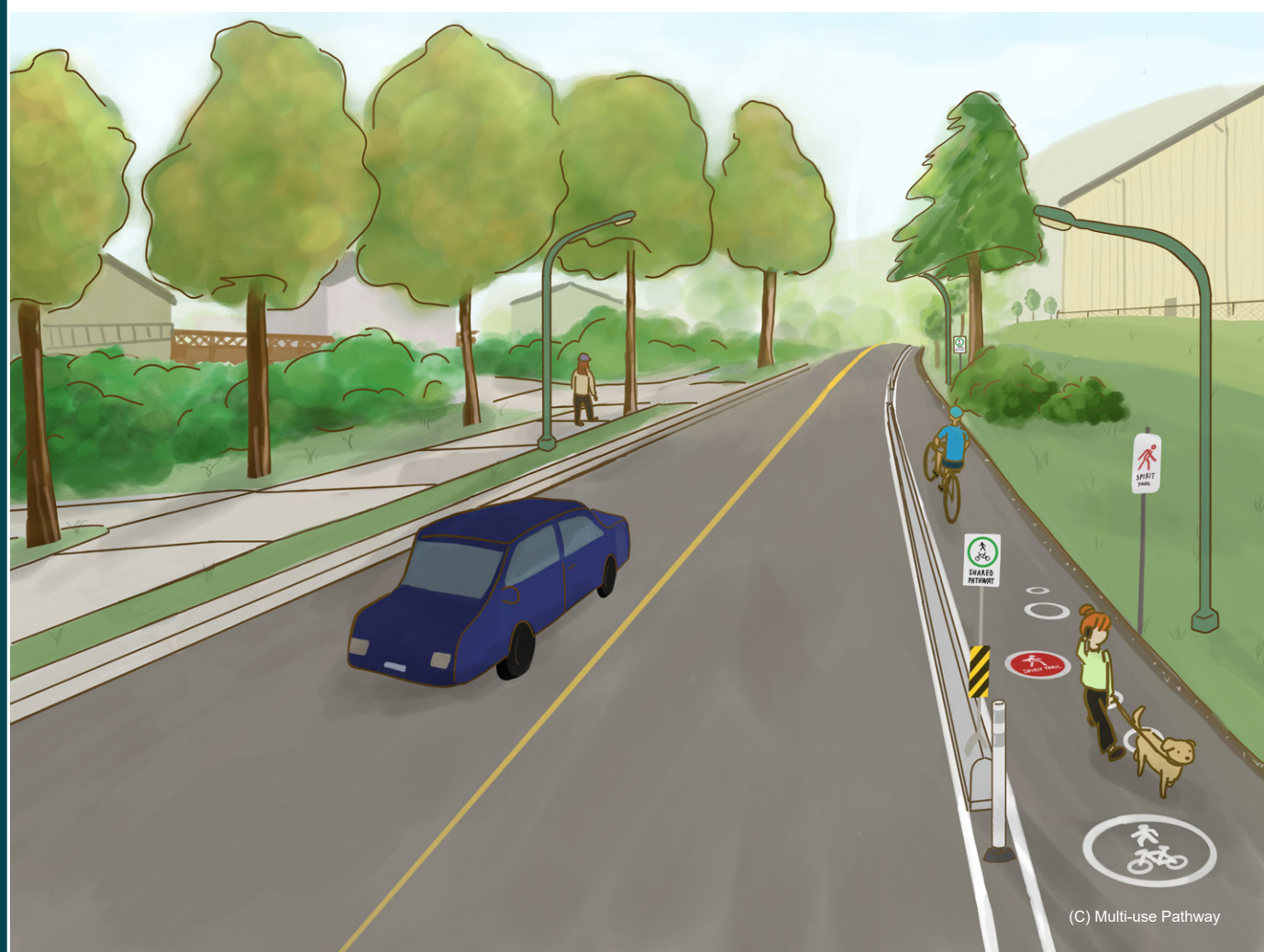


# Spirit Trail Eastern Extension

*What could the Spirit Trail Eastern Extension look like?*

## What could the trails look like?

These illustrations give examples of the many possible configurations.



# Spirit Trail Eastern Extension

## Route Options

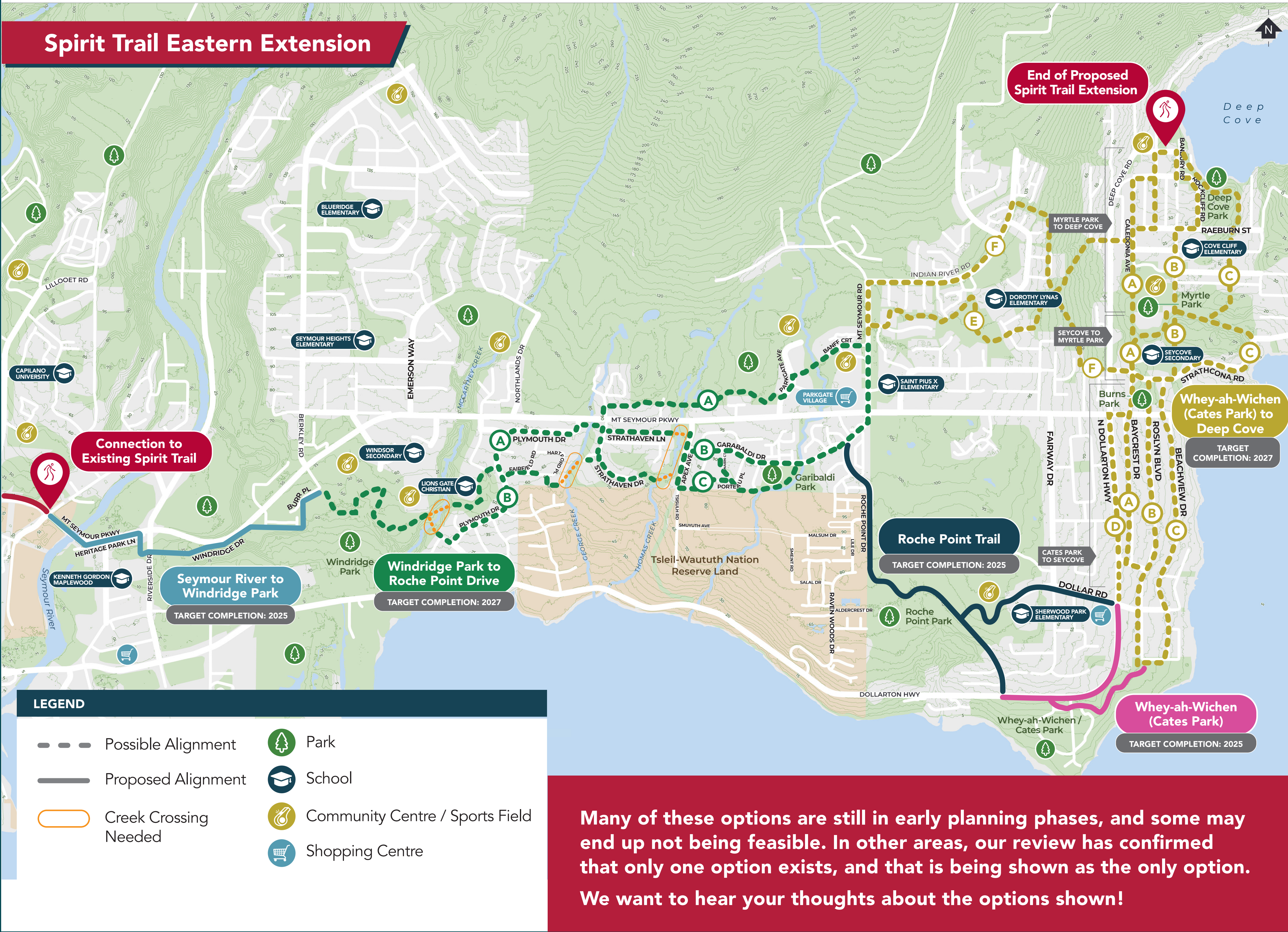
Some route options have been added in response to public input. All route options shown on the map are being considered and will be evaluated by the project team.

Planning and engineering work is underway to confirm specific alignments between destinations along these route options. Some have more certainty than others.

**This map shows the options currently being studied by the project team**

### Routing options must balance:

- Safety of all users
- Topography and cycling and pedestrian comfort
- Transportation and recreation value, including equitable access to nature
- Environmental, archaeological, and cultural considerations
- Cost
- Other considerations, including existing projects and plans that may align with the Spirit Trail



Many of these options are still in early planning phases, and some may end up not being feasible. In other areas, our review has confirmed that only one option exists, and that is being shown as the only option. We want to hear your thoughts about the options shown!



# Spirit Trail Eastern Extension

## *Seymour River to Windridge Park*

The first Spirit Trail Eastern Extension segment to be completed will connect the current end of the Spirit Trail (near Superstore) to Windridge Park (near Canlan Ice Sports).

The trail design along this segment will vary based on the environment, and consist of a variety of facility types, such as multi-use paths, neighbourhood bikeways, and protected bike lanes.

A new pathway connection will be completed adjacent to Kenneth Gordon Maplewood School, connecting Heritage Park Lane to Riverside Drive.

The priority along this segment will be improving cycling safety and comfort. The work will consist of wayfinding signage, pavement markings, low-cost adjustable materials, lighting, and intersection improvements.

This alignment avoids sensitive habitats, including an eagle's nest. It also utilizes existing and well used cycling corridors and pathways.

### This map shows the alignment for this segment.



Keep an eye on [DNV.org/Spirit-Trail-East](https://dnv.org/spirit-trail-east) for updates.



# Spirit Trail Eastern Extension

**Thank you for attending the  
Spirit Trail Eastern Extension  
Open House Information Session!**



## What's next?

---

Topographic surveys, as well as tree, environmental, and archaeological assessments, are all underway for the trail segment between Seymour River and Windridge Park.

We expect to start construction on the the segment between Seymour River and Windridge Park in late 2024 or early 2025. Residents living near this segment will receive more information ahead of construction.

Similar assessment work is also underway for a Whey-ah-Wichen (Cates Park) segment, and a segment connecting Dollarton Highway to the Parkgate area through Roche Point Trail.

As we plan and prepare to implement each segment of the Spirit Trail, we will be reaching out to local neighbourhoods and posting updates online.

---

**Follow the progress at [DNV.org/Spirit-Trail-East](https://dnv.org/spirit-trail-east)**

